

Knob



A



B



C



D



E



F

Handle



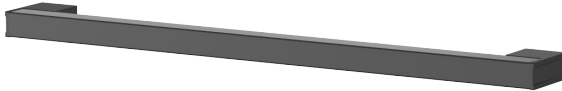
G



H



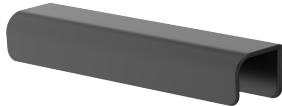
I



J



K

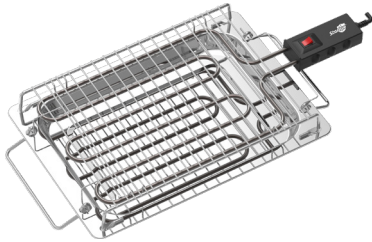


L

Electrical BBQ

EASY COOKING NOVICE TO CHEF

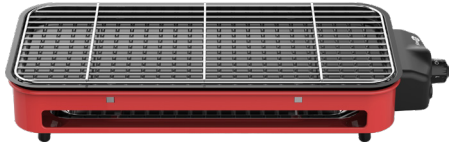




MOD:9001 Electric BBQ

- AC: 220-240V 50/60Hz
- Power: 2250W
- Capacity: 3*0.75*1 CCA VDE Plug
- 3Lyer Color Box
- 5Lyer Carton Box

TECHNICAL SPECIFICATIONS	
Product size	: 578*275*95mm
Color box size	: 510*275*105mm
Pcaking size	: 517*570*440mm
N.W./G.W	: 1.39kgs//1.68kgs
PCS/CTN	: 8
QTY(20GP/40HQ)	: 1784/4280pcs



MOD:9002 Electric BBQ

- AC: 220-240V 50/60Hz
- Power: 1500W
- Capacity: 3*0.75*1 CCA VDE Plug
- 3Lyer Color Box
- 5Lyer Carton Box

TECHNICAL SPECIFICATIONS	
Product size	: 512*224*90mm
Color box size	: 470*230*80mm
Pcaking size	: 480*340*475mm
N.W./G.W	: 2.21kgs/2.51kgs
PCS/CTN	: 8
QTY(20GP/40HQ)	: 2880/7040pcs



MOD:9003H Electric BBQ

- AC: 220-240V 50/60Hz
- Power: 2000W
- Capacity: 3*0.75*1 CCA VDE Plug
- 3Lyer Color Box
- 5Lyer Carton Box

TECHNICAL SPECIFICATIONS	
Product size	: 475*342*905mm
Color box size	: 475*35*105mm
Pcaking size	: 485*715*460mm
N.W./G.W	: 1.45kgs/1.52kgs
PCS/CTN	: 8
QTY(20GP/40HQ)	: 1450/3400pcs



MOD:9102 Electric BBQ

- AC: 220-240V 50/60Hz
- Power: 2250W
- Capacity: 3*0.75*1 CCA VDE Plug
- 3Lyer Color Box
- 5Lyer Carton Box

TECHNICAL SPECIFICATIONS	
Product size	: /
Color box size	: /
Pcaking size	: /
N.W./G.W	: /
PCS/CTN	: /
QTY(20GP/40HQ)	: /



MOD:9102J Electric BBQ

- AC: 220-240V 50/60Hz
- Power: 1500W
- Capacity: 3*0.75*1 CCA VDE Plug
- 3Lyer Color Box
- 5Lyer Carton Box

TECHNICAL SPECIFICATIONS	
Product size	: /
Color box size	: /
Pcaking size	: /
N.W./G.W	: /
PCS/CTN	: /
QTY(20GP/40HQ)	: /



MOD:9103 Electric BBQ

- AC: 220-240V 50/60Hz
- Power: 2000W
- Capacity: 3*0.75*1 CCA VDE Plug
- 3Lyer Color Box
- 5Lyer Carton Box

TECHNICAL SPECIFICATIONS	
Product size	: /
Color box size	: /
Pcaking size	: /
N.W./G.W	: /
PCS/CTN	: /
QTY(20GP/40HQ)	: /



MOD:9007 Electric BBQ

- AC: 220-240V 50/60Hz
- Power: 2250W
- Capacity: 3*1.0*1 CCA VDE Plug
- 3Lyer Color Box
- 5Lyer Carton Box

TECHNICAL SPECIFICATIONS	
Product size	: 515*215*102mm
Color box size	: 560*260*130mm
Pcaking size	: 570*540*540mm
N.W./G.W	: 2.60kgs//2.48kgs
PCS/CTN	: 8
QTY(20GP/40HQ)	: 1344/3280pcs



MOD:9101 Electric BBQ

- AC: 220-240V 50/60Hz
- Power: 1800W
- Capacity: 3*0.75*1 CCA VDE Plug
- 3Lyer Color Box
- 5Lyer Carton Box

TECHNICAL SPECIFICATIONS	
Product size	: 397*308*93mm
Color box size	: 400*95*310mm
Pcaking size	: 410*390*630mm
N.W./G.W	: /
PCS/CTN	: 8
QTY(20GP/40HQ)	: 2080/5056pcs



MOD:9101H Electric BBQ

- AC: 220-240V 50/60Hz
- Power: 1500W
- Capacity: 3*0.75*1 CCA VDE Plug
- 3Lyer Color Box
- 5Lyer Carton Box

TECHNICAL SPECIFICATIONS	
Product size	: 397*308*750mm
Color box size	: 400*120*310mm
Pcaking size	: 410*500*320mm
N.W./G.W	: /
PCS/CTN	: 4
QTY(20GP/40HQ)	: 1580/3848pcs



MOD:9103J Electric BBQ

- AC: 220-240V 50/60Hz
- Power: 2250W
- Capacity: 3*1.0*1 CCA VDE Plug
- 3Lyer Color Box
- 5Lyer Carton Box

TECHNICAL SPECIFICATIONS	
Product size	: /
Color box size	: /
Pcaking size	: /
N.W./G.W	: /
PCS/CTN	: /
QTY(20GP/40HQ)	: /